

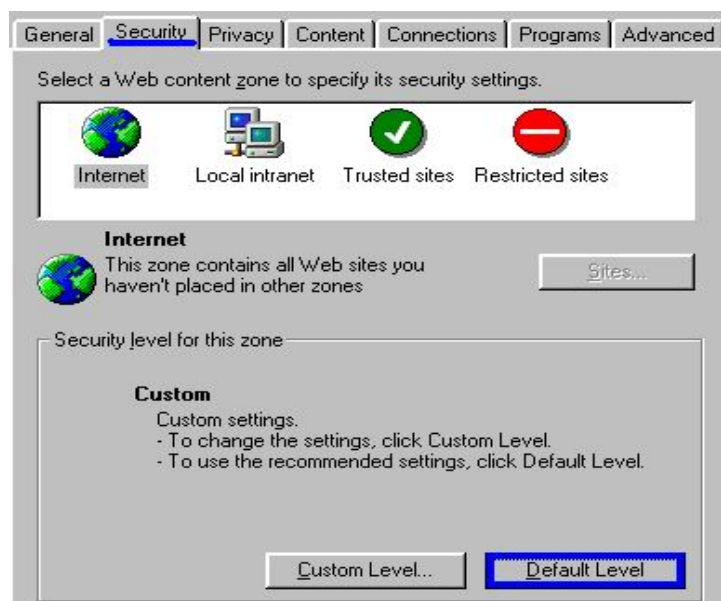
1. Client Settings (Windows XP/2000/Me/98SE)

At the initial access to the “Connection type” page in Windows, the web browser will ask for a new plug-in installation, the plug-in being the Network Camera. This plug-in has been registered for certification and can be used to change the parameters at the client’s site. The user may click on to install the plug-in. If the web browser does not allow the user to complete the installation, check the Internet security to lower the security level or contact your IT or networking supervisor.

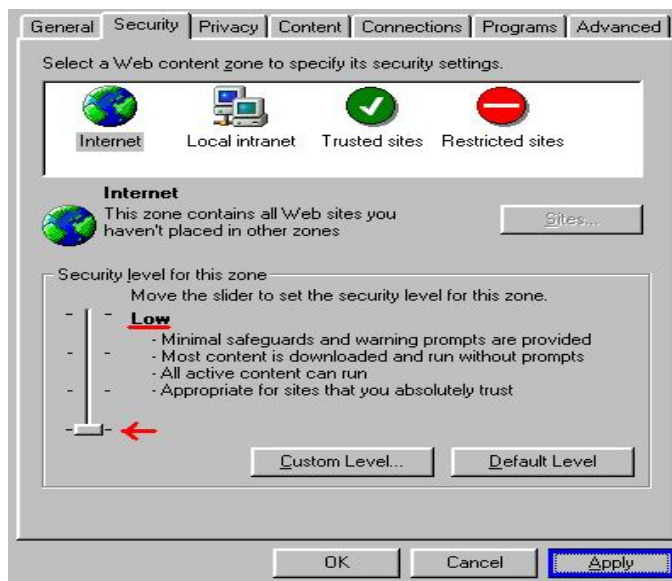
1. Initial IE browser, select function item “Tools”-> “Internet Options”



2. Security-> Default Level



3. Lower down the security level bar to “Low”, and press “Apply”

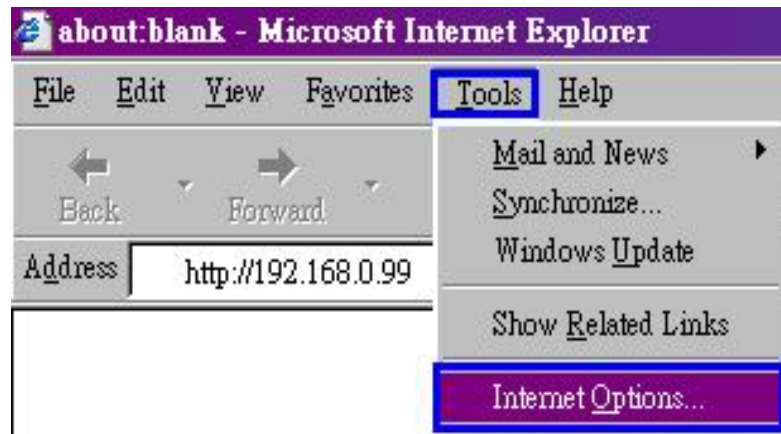


4. Refresh IE Browser, a question frame will pop-up to ask for download Active-X. press “Yes”.

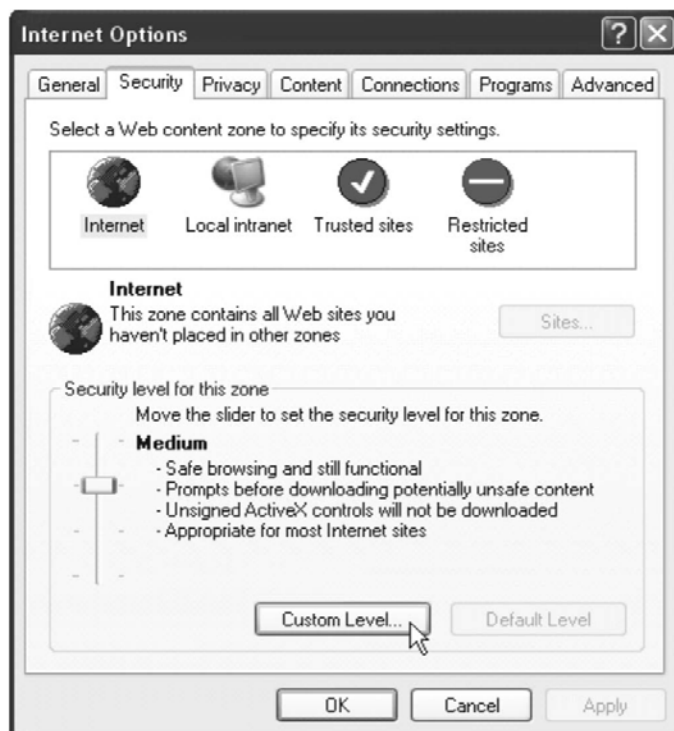


2.Client Settings (Windows XP SP2)

1. Initial IE browser, select function item “Tools”→ “Internet Options”



2. Security →”Custom Level”



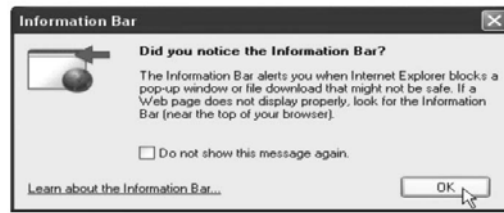
1. Security Settings → Download unsigned ActiveX Controls set “Enable” and press “OK”



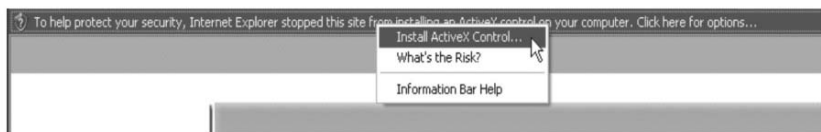
2. Press “Apply” and then “OK”



5. Go to the Webcam Page (<http://www.go2.com/webcam>) and press “OK” on Information Bar.



6. Click the blue bar under the Webcam Page’s URL Bar in the browser, then choose “Install ActiveX Control”



7. Recover security settings. Download unsigned ActiveX Controls set “Disable” and press “OK” and “Apply”

